

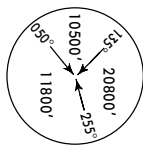
10-2

STAR

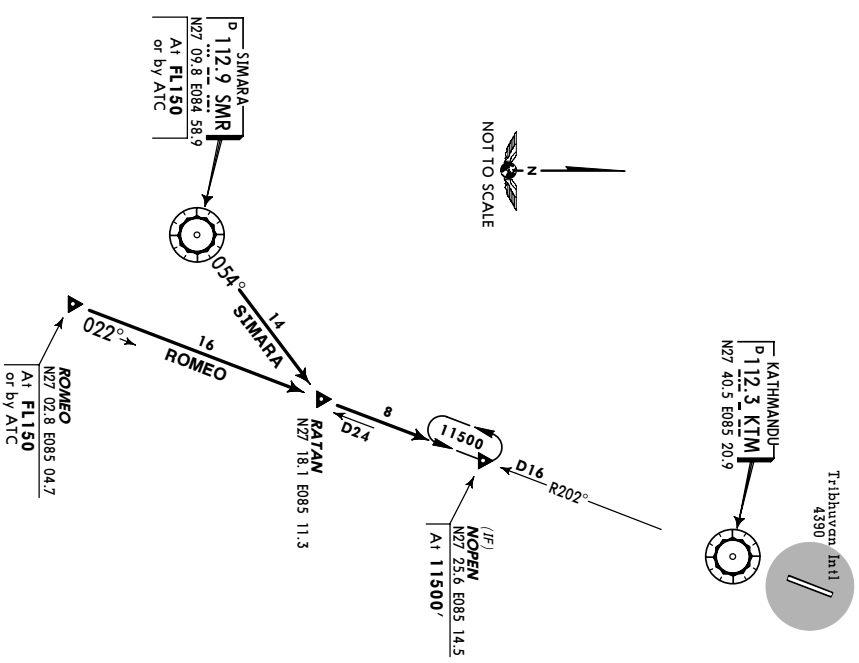
KATHMANDU, NEPAL
TRIBHUVAN INTL

ROMEO, SIMARA
ARRIVALS
(RWY 02)

TRANS LEVEL: FL150
TRANS ALT: 13500'



Follow ATC Descent Clearance Instruction but do not descend below Minimum Safety Profile.



ROUTING

ALTITUDE

STAR	ROUTING	ALTITUDE
ROMEO	At Romeo Int turn RIGHT, intercept KTM R-202 inbound via Ratan Int to Nopen Int.	Cross Romeo Int at FL150 or by ATC, Nopen Int at 11500',
SIMARA	Intercept SMR R-054 to Ratan Int, intercept KTM R-202 inbound to Nopen Int.	Cross SMR VORDME at FL150 or by ATC, Nopen Int at 11500'.

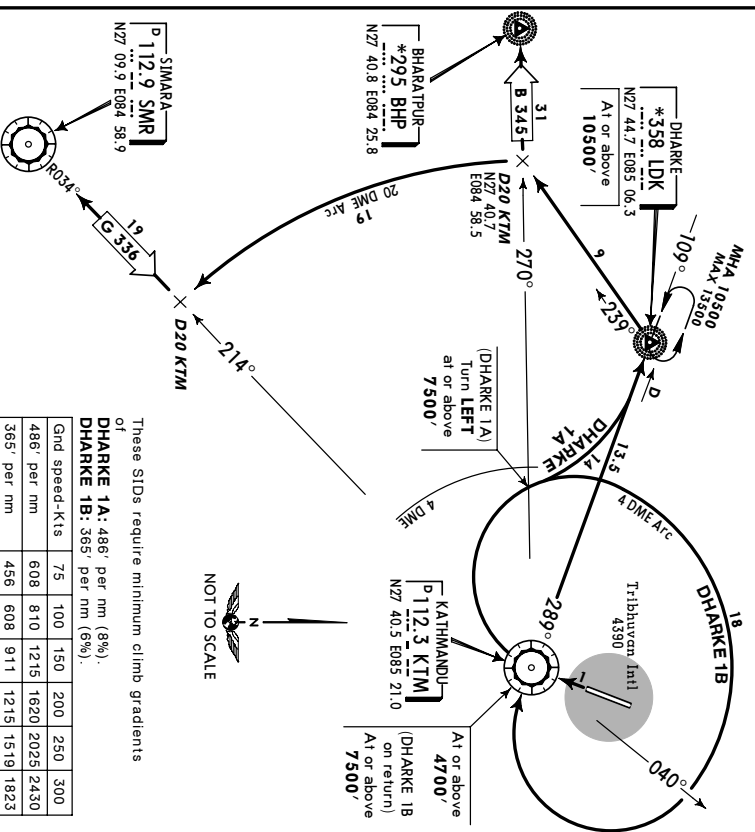
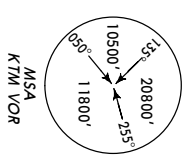
10-3

SID

KATHMANDU, NEPAL
TRIBHUVAN INTL

DHARKE 1A, DHARKE 1B
DEPARTURES
(RWY 20)

TRANS LEVEL: FL150
TRANS ALT: 13500'



These SIDs require minimum climb gradients of
DHARKE 1A: 486' per nm (8%).
DHARKE 1B: 365' per nm (6%).

Gnd speed-Kts	75	100	150	200	250	300
486' per nm	608	810	1215	1620	2025	2430
365' per nm	456	608	911	1215	1519	1823

SID

ROUTING

CLIMB INSTRUCTION/ALTITUDE

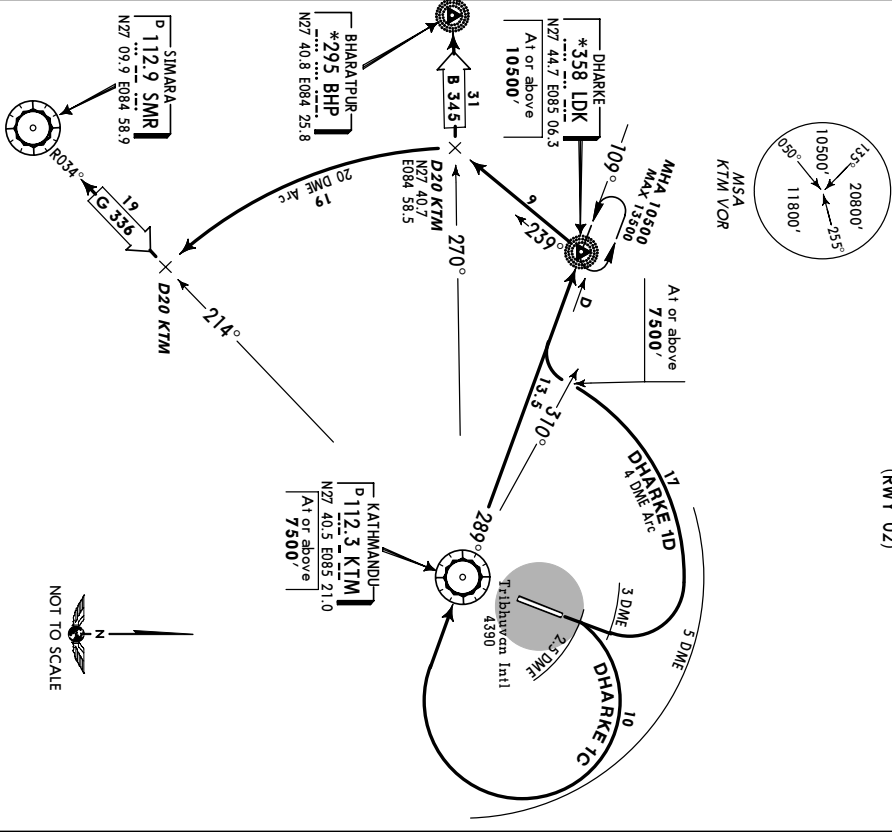
SID	ROUTING	CLIMB INSTRUCTION/ALTITUDE
DHARKE 1A	Straight ahead to KTM VORDME, turn RIGHT (re-maining within 4 DME), when crossing KTM R-270 turn LEFT, intercept KTM R-289 to LDK Lctr. Then via B 345 to BHP NDB or via G 336 to SMR VORDME.	Climb to MEA . Cross KTM VORDME at or above 4700' , KTM R-270 at or above 7500' , LDK Lctr at or above 10500' .
DHARKE 1B	Straight ahead to KTM VORDME, turn RIGHT, proceed along 4 DME arc, after crossing KTM R-040 turn RIGHT to KTM VORDME, intercept KTM R-289 to LDK Lctr. Then via B 345 to BHP NDB or via G 336 to SMR VORDME.	Climb to MEA . Cross KTM VORDME at or above 4700' and (on re-turn) at or above 7500' , LDK Lctr at or above 10500' .

KATHMANDU, NEPAL
 TRIBHUVAN INTL

SID

TRANS LEVEL: FL150
 TRANS ALT: 13500'

DHARKE 1C, DHARKE 1D
 DEPARTURES
 (RWY 02)



These SIDs require a minimum climb gradient of 365' per nm (6%).

Ground speed-Kts	75	100	150	200	250	300
365' per nm	456	608	911	1215	1519	1823

Departure turns are limited to MAX IAS 180 KT.

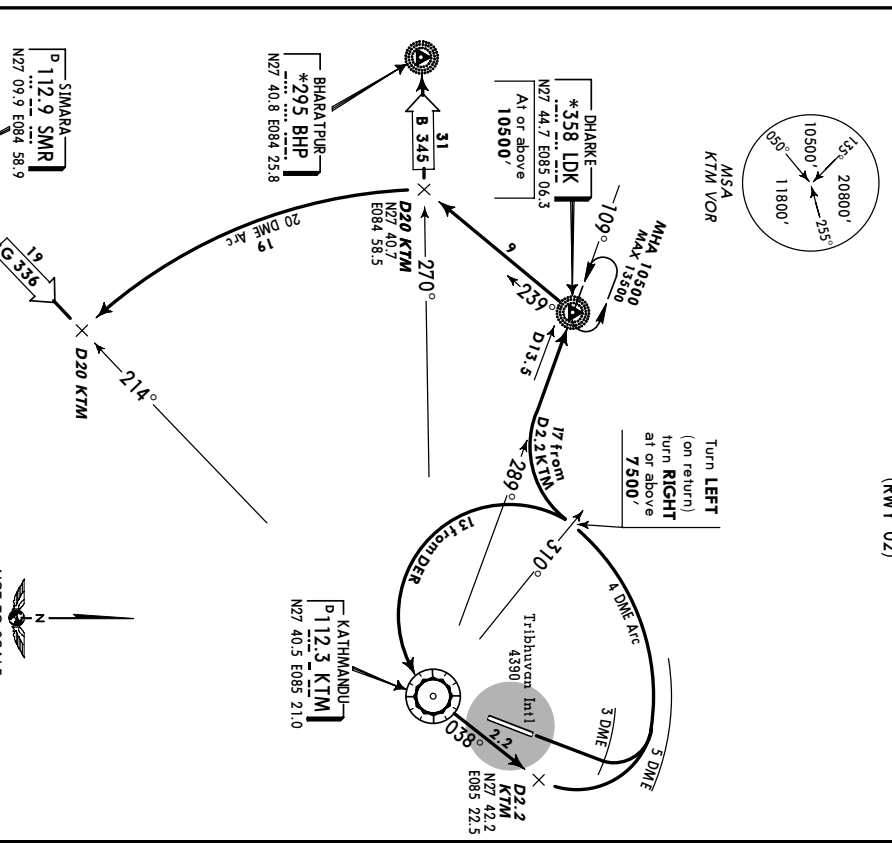
SID	ROUTING	CLIMB INSTRUCTION/ ALTITUDE
DHARKE 1C	Straight ahead to KTM 2.5 DME, turn RIGHT (remaining within 5 DME) to KTM VORDME, intercept KTM R-289 to LDK Lctr. Then via B 345 to BHP NDB or via G 336 to SMR VORDME.	Climb to MEA . Cross KTM VORDME at or above 7500' , LDK Lctr at or above 10500' .
DHARKE 1D	Straight ahead to KTM 3 DME, turn LEFT (remaining within 5 DME), proceed along 4 DME arc, when crossing KTM R-310 turn RIGHT, intercept KTM R-289 to LDK Lctr. Then via B 345 to BHP NDB or via G 336 VORDME.	Climb to MEA . Cross KTM R-310 at or above 7500' , LDK Lctr at or above 10500' .

KATHMANDU, NEPAL
 TRIBHUVAN INTL

SID

TRANS LEVEL: FL150
 TRANS ALT: 13500'

DHARKE 1E
 DEPARTURE
 (RWY 02)



This SID requires a minimum climb gradient of 365' per nm (6%).

Ground speed-Kts	75	100	150	200	250	300
365' per nm	456	608	911	1215	1519	1823

Departure turns are limited to MAX IAS 180 KT.

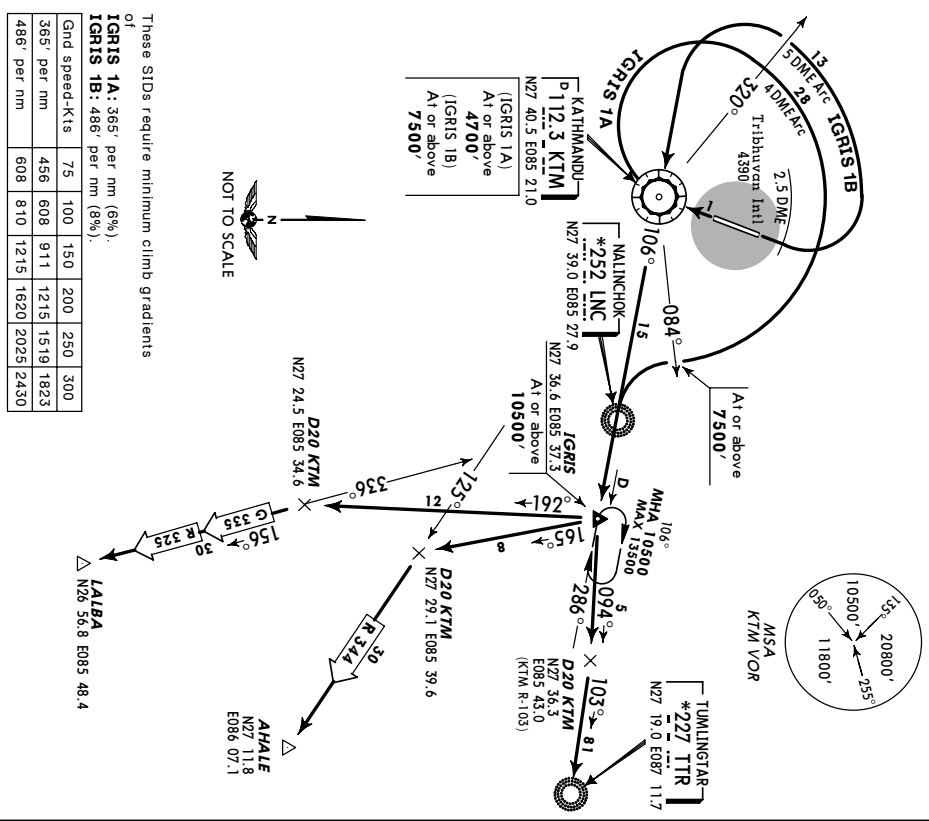
ROUTING	CLIMB INSTRUCTION/ ALTITUDE
Straight ahead to KTM 3 DME, turn LEFT, proceed along 4 DME arc, when crossing KTM R-310 turn LEFT to KTM VORDME, intercept KTM R-038 to D2.2 KTM, turn LEFT, proceed along 4 DME arc, at KTM R-310 turn RIGHT, intercept KTM R-289 to LDK Lctr. Then via B 345 to BHP NDB or via G 336 to SMR VORDME.	Climb to MEA . Cross KTM R-310 on return at or above 7500' , LDK Lctr at or above 10500' .

JEPPESSEN 7 DEC 01 **(10-3C)**

SID
KATHMANDU, NEPAL
TRIBHUVAN INTL

TRANS LEVEL: FL150
TRANS ALTI: 13500'

IGRIS 1A, IGRIS 1B
DEPARTURES
(RWYS 20, 02)

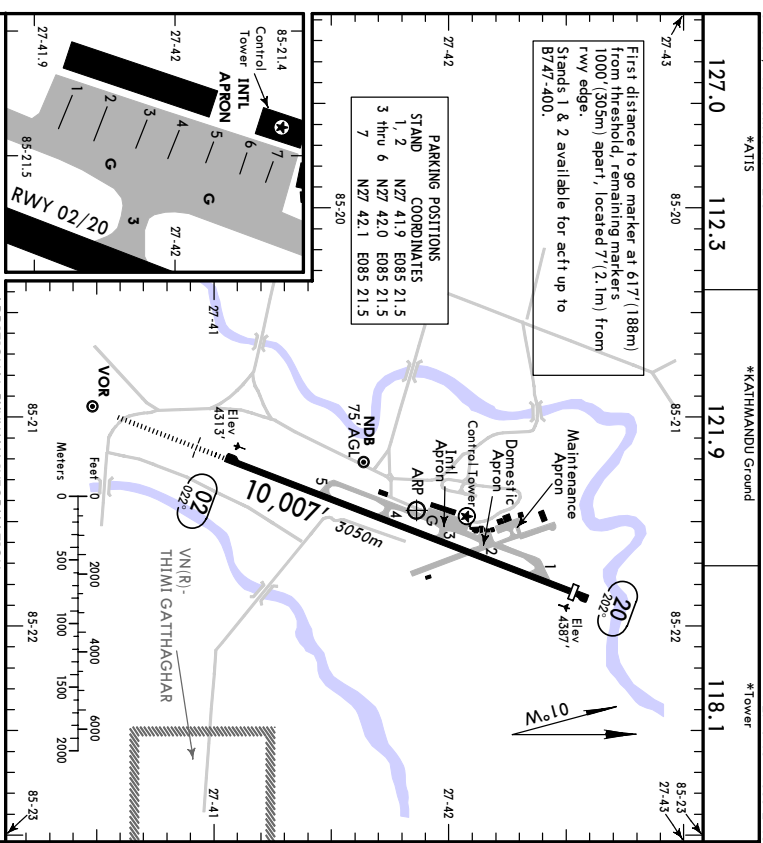


Gnd speed-Kts	75	100	150	200	250	300
365' per nm	456	608	911	1215	1519	1823
486' per nm	608	810	1215	1620	2029	2430

Departure turns are limited to MAX IAS 180 KT.

SID	RWY	ROUTING	CLIMB INSTRUCTION/ ALTITUDE
IGRIS 1A	20	Straight ahead to KTM VORDME, turn RIGHT, proceed along (remaining within) 4 DME arc, when crossing KTM R-084 turn LEFT, intercept KTM R-106 to Igris Int. Then via R 344 to Ahale Int or via R 325 and G 335 to Lalba Int or via KTM R-103 to TTR NDB.	Climb to MEA . Cross KTM VORDME at or above 4700' , KTM R-084 at or above 7500' , Igris Int at or above 10500' .
IGRIS 1B	02	Straight ahead to KTM 2.5 DME, turn LEFT, proceed along (remaining within) 5 DME arc, when crossing KTM R-320 turn LEFT to KTM VORDME, intercept KTM R-106 to Igris Int. Then via R 344 to Ahale Int or via R 325 and G 335 to Lalba Int or via KTM R-103 to TTR NDB.	Climb to MEA . Cross KTM VORDME at or above 7500' , Igris Int at or above 10500' .

VNKT
4390'
Apr Elev 019.87/1.4 from KTM 112.3
JEPPESSEN 5 APR 02 **(10-9)**
KATHMANDU, NEPAL
TRIBHUVAN INTL
N27 41.8 E085 21.5



RWY	HIRL	HIALS	PAPI	(angle 3.0°)	THRESHOLD	GLIDE SLOPE	TAKE-OFF	WIDTH
02	HIRL	HIALS	PAPI	(angle 3.0°)	9613'	2950m		150'
								46m

TAKE-OFF		All Rwy's	
2	Eng	1 & 2	TURBOROP
3 & 4	Eng	3 & 4	800m

